



Presentation

V2 – 02/01/15



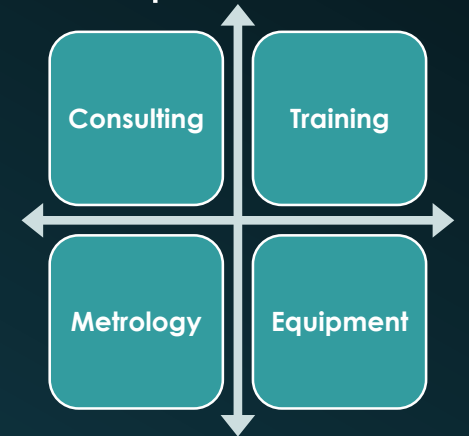
**Services provided by people
who enjoy their work**

The Company

- Presentation
- Principles of Action
- Policies and Codes

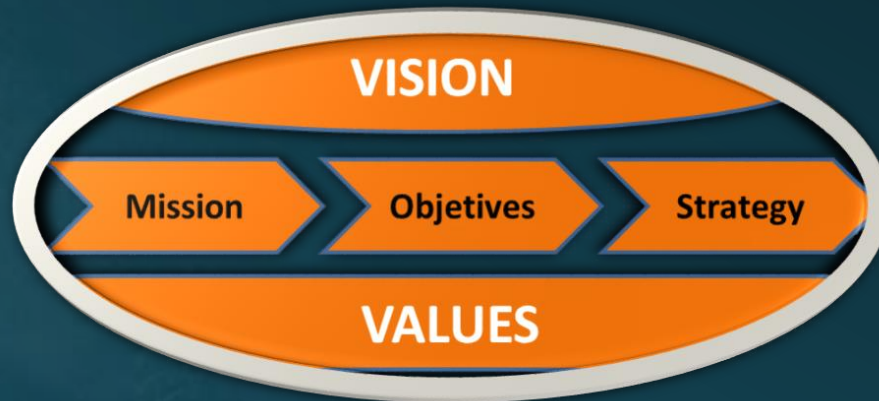
Presentation

- **MyMETRO** was born with the straight proposition of provide services in the following areas:
 - **metrology.**
 - **consulting.**
 - **training.**
 - **buying and selling of industrial equipment.**
- Our main activity is the calibration of weighing instruments/scales. MyMETRO has its own laboratory and preferentially uses the innovative method, developed by the company called **METRObet SYSTEM[®]**.



Principles of Action

Framework



Principles of Action



<http://www.mymetro.pt/acao.html>

Policies and codes

- Policies

- Global Management Policy
- Quality Policy
- Health & Safety Policy
- Environment Policy
- Social Responsibility Policy



- Codes

- Code of Ethics and Business Conduct

<http://www.mymetro.pt/qualidade.html>

Services

- Metrology
- Consulting
- Training
- Equipment

Metrology

- MyMETRO through its metrology laboratory, provides weighing instrument/scales calibration services with standard weights and non-standard weights and / or measurement system of forces - **METRObet SYSTEM[®]**.
- The **METRObet SYSTEM[®]** distinguished by its innovation, ease of implementation, speed and reliability of results.
- We provide services in the industry in general, highlighting some specific sectors such as ready mix concrete , prefabrication of concrete, bituminous and aggregates.
- We perform calibrations at the customer site, facilitating production processes, enabling rapid service performed with only 1 customer collaborator and significant reduction in downtime.

METRObet[®]

SYSTEM

METRObet SYSTEM[®]



- Costs



+ Safety



- Time



+ Easy



+ Versatile



+ Accuracy

Consulting

- We believe that companies with more knowledge and open to change, imposed by the huge dynamic of the markets are those that have the best conditions to create value for their stakeholders. Make them more competitive, sustainable and profitable is the goal of our work.
- We work with our customers in order to improve their performance, by improving the efficiency and effectiveness of key activities of their business, based on accurate diagnosis.
- MyMETRO provides technical expertise through a team, that for its background, ensuring real knowledge, based on experience and work in different business environments.

We operate mainly in the following areas:

- Health & Safety
- Technical inspections of Work Equipment (DL 50/2005)
- Removal / demolition of asbestos-containing materials
- CE marking machines
- Implementation and maintenance of management systems (Quality - NP EN ISO 9001 / Environment - NP ISO 14001 / EN Safety - NP 4397 / OHSAS 18001)
- Industrial licensing (permits)
- Industrial maintenance (organization, planning and management)
- Design and installation of concrete plants
- Concrete (mix-design, production control, special products - NP EN 206-1)
- CE marking of products
- Strategic consulting (process optimization / differentiation and innovation)
- Electrical installations (design, technical responsibility, supervision)
- Quality , Environment and Safety audits
- Management support (cost reduction, sales optimization, reengineering / optimization process)

Training

- We provide tailor-made solutions by conducting appropriate training and awareness-raising actions to resolve specific problems, always in close and direct dialogue with our customers.
- Only this combination of proximity to customers, along with the highest quality standards and individual assistance, guarantees success.



Atuamos, principalmente, nas seguintes áreas:

- Health & Safety
- CE marking machines
- Removal / demolition of asbestos-containing materials
- Work at height
- Safety in Construction and Public Works
- Safety for industrial mobile equipment drivers
- Safety(NP 4397/OSHAS 18001)
- Environment(NP EN ISO 14001)
- Quality(NP EN ISO 9001)
- Safety for truck drivers
- Safety in Ready Mix Concrete / Aggregates / Prefabrication / Bituminous Industries
- Safety in Metallurgy / Metalworking Industries
- Safety in performing electrical work
- Industrial maintenance (organization, planning and management)
- CE Marking Products
- Safety in carpentry
- Management of Monitoring and Measurement Equipment
- First Aid

Equipment

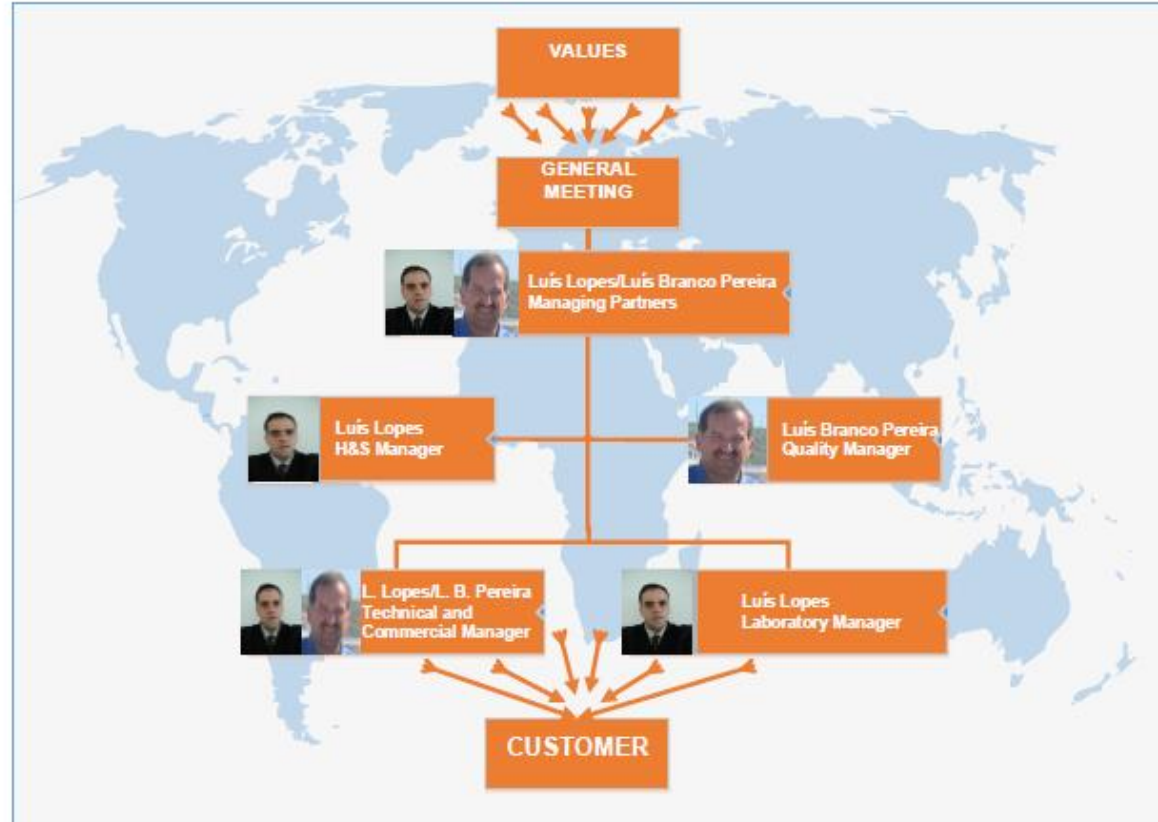
- **MyMETRO** offers a buying/selling service of industrial equipment.
- With a vast knowledge of the Portuguese market, we have your solution in buying and selling equipment, developing our activity in domestic and international markets.
- In the area of industrial equipment, **MyMETRO** also provides the following services:
 - Technical inspections of equipment according to the DL 50/2005
 - Training directed to industrial mobile equipment drivers and truck drivers
 - Manuals preparation of equipment instructions
 - Planning and Maintenance Management

Organizational Structure

- Organization chart

Organization chart

Review: 01 Date: 02-01-2015



Contacts

- **Luís Lopes**
 - +351 919 716 849
 - luislopes@mymetro.pt
 - Skype: luispaulalopes
- **Luís Carvalho**
 - +351 917 561 420
 - luiscarvalho@mymetro.pt
 - Skype: lmr Carvalho1
- **Luís Branco Pereira**
 - +351 917 561 440
 - brancopereira@mymetro.pt
 - Skype: lbrancopereira

geral@mymetro.pt
www.mymetro.pt

MyMETRO – Consulting, Training & Metrology, Lda
Rua Dr. Gomes Leal, nº 3-A
2560-331 Torres Vedras



Strength & Brain